

Help Us Write the Next Chapter at Sherwood Branch Library



**Sherwood Branch Library
Renovation Project**

A place where stories are shared, connections are made, and the joy of lifelong learning thrives.

Step inside Sherwood Branch Library on any given day, and you'll find connection, comfort, and safety. You'll see children curled up with their favourite stories, seniors catching up over the newspaper, and youth finding a sense of belonging after school.

For 40 years, the Sherwood Branch has been a welcoming beacon in London's northwest. Located in Sherwood Forest Mall, near the intersection of Gainsborough and Wonderland Road. Sherwood Branch has long served as a vital hub for children, youth, families, and seniors. It is a true cornerstone of community life.

Now, the story of Sherwood Branch is ready for its next chapter.

We are embarking on a bold and necessary transformation: to reimagine Sherwood Branch as a modern, accessible, and inspiring space that reflects the evolving needs of its vibrant and diverse community.

A revitalized Sherwood Branch Library will support future generations.

Every visitor brings a story, and Sherwood Branch offers a welcoming space for each one to unfold. This project ensures we can continue doing just that for the next generation and beyond.

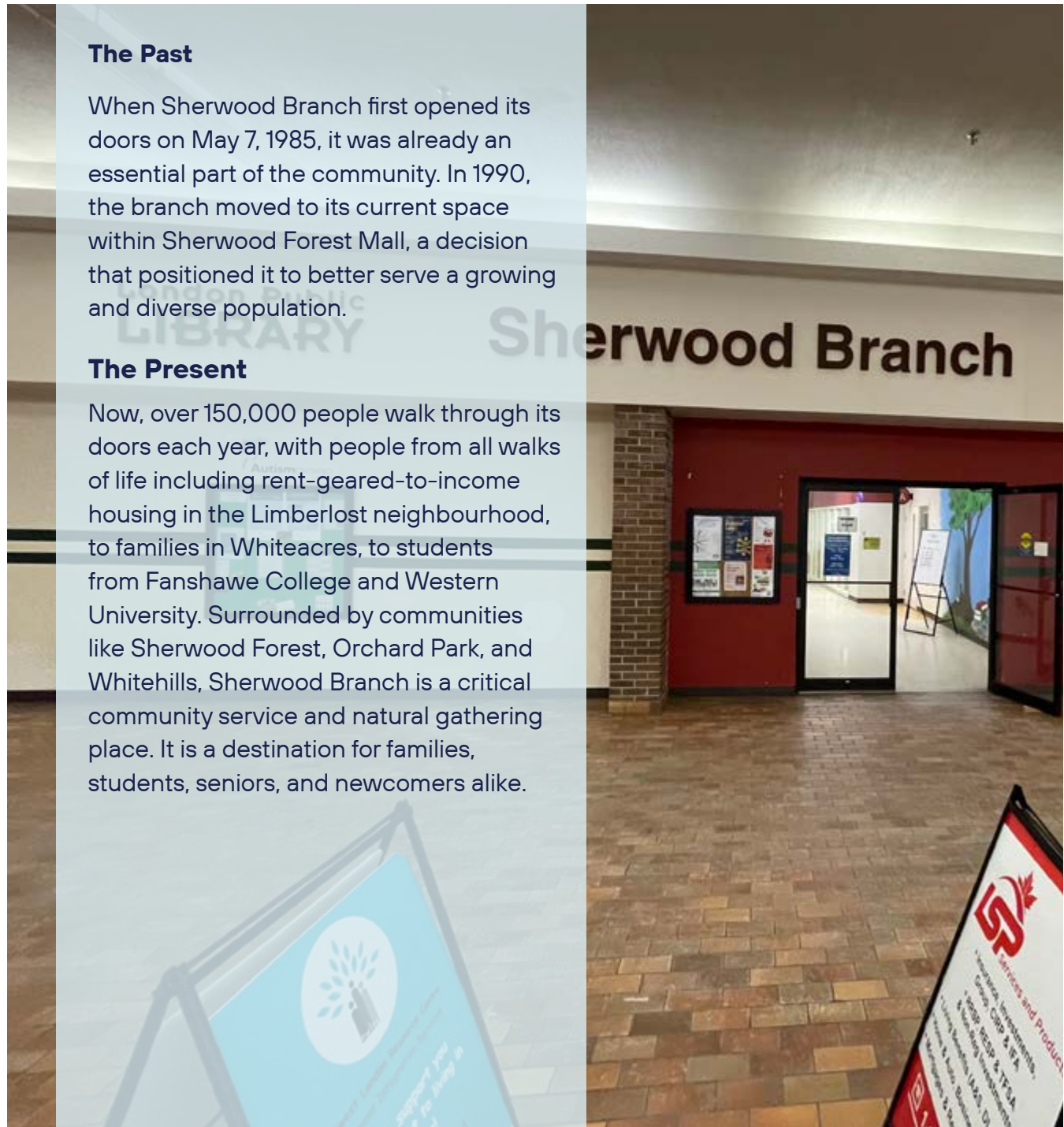
"At Sherwood, we see the difference a safe, welcoming space can make. Whether someone needs a quiet place to study, a friendly face, or simply somewhere to feel at home—we're here. Meaningful interactions happen every day at Sherwood, and every member of our team shares the same passion for supporting our community." — Dayna Peebles, Sherwood Branch Supervisor

"I think about the kids who will develop a love for books here, the students who will study and connect with friends, and the incredible ideas that will bubble up from the conversations that will happen in this space." — Councillor Corrine Rahman, Ward 7



The Beating Heart of a Vibrant Community

Sherwood Branch Library is a safe haven where the community comes together to learn, connect, and grow—and it needs your help.



The Past

When Sherwood Branch first opened its doors on May 7, 1985, it was already an essential part of the community. In 1990, the branch moved to its current space within Sherwood Forest Mall, a decision that positioned it to better serve a growing and diverse population.

The Present

Now, over 150,000 people walk through its doors each year, with people from all walks of life including rent-geared-to-income housing in the Limberlost neighbourhood, to families in Whiteacres, to students from Fanshawe College and Western University. Surrounded by communities like Sherwood Forest, Orchard Park, and Whitehills, Sherwood Branch is a critical community service and natural gathering place. It is a destination for families, students, seniors, and newcomers alike.

Creating New Spaces with New Possibilities.

The Future

Despite its popularity, Sherwood Branch Library’s infrastructure is struggling to meet the needs of its community. The Library is at capacity, and the current space can no longer support the diverse services and growing demand. The layout is outdated, and the facility lacks the flexibility and resources to accommodate the ever-evolving needs of its patrons.

The Time has Come for a Change.

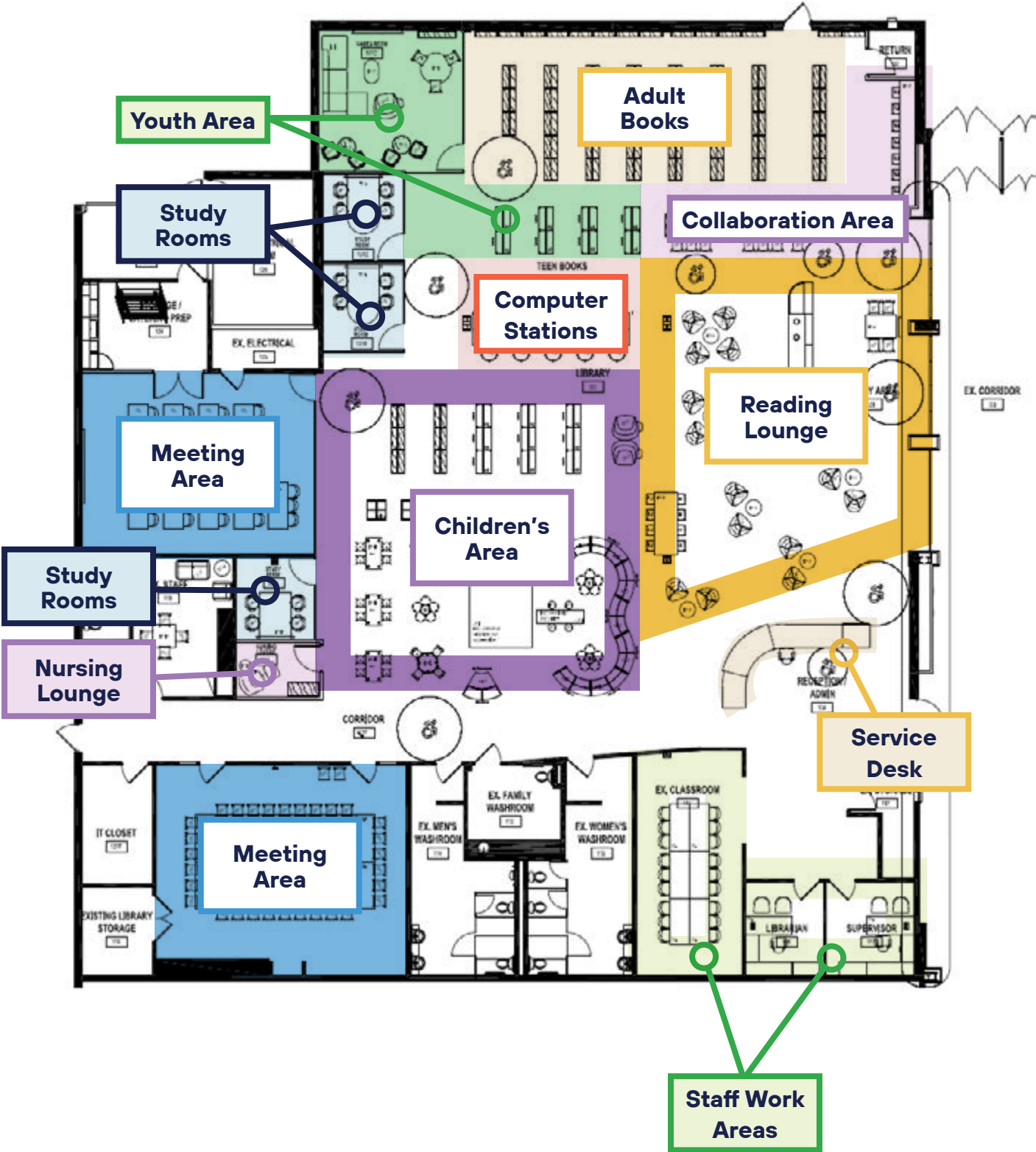
In January 2025, the Sherwood Branch renovation officially began, with doors set to reopen this fall. The transformation is more than a physical upgrade; it’s a reimagining of what the library can be for the community. The revitalized space will be brighter, more welcoming, and, most importantly, more functional and flexible. We’re planning spaces that encourage creativity, learning, and connection.

Inclusive and Accessible Spaces

- Larger, accessible multi-purpose meeting rooms
- Quiet rooms and study areas
- Computer stations and laptop bars for students and entrepreneurs
- Expanded program and meeting spaces for all ages
- A children’s reading and play area, complete with interactive features including a tool shed, low book shelves, and playful furniture
- Versatile lounge area and youth room
- Greater energy efficiency and natural lighting
- Improved sightlines for safety and security

This transformation will allow Sherwood Branch to become a modern-day community hub where everyone feels welcome, supported, and inspired. With these upgrades, Sherwood Branch will continue to be a destination for families, students, seniors, and newcomers alike. It will be a space where everyone feels they belong.

New Sherwood Branch Library Floor Plan



New Sherwood Branch Library

We're breathing new life and longevity into the heart of Sherwood Branch. We've intentionally redesigned the Library to reflect the strength and spirit of the vibrant community that use it everyday, offering new opportunities for connection and growth.



Above: Architectural rendering of the transformed main lobby at Sherwood Branch Library, illustrating a brighter, more welcoming space designed for community connection.

Left: Architectural rendering of the expanded meeting room with more space, more flexibility, and better tools to support learning, collaboration, and engagement.

"The Sherwood Branch is my home branch. It's where I brought my kids to learn to read... The Sherwood renovation will mean so much to this community and beyond."

— Mayor Josh Morgan, Library Board Member



Children’s Area

The newly designed children’s area will offer a safe, engaging space for young minds to develop a love for reading and learning. With interactive features like a toolshed and low book shelves for hands-on discovery, children will have a space to explore, grow, and spark their curiosity. This area will become a popular after-school destination, where kids can socialize, read, study, and play.



“It is really important to have a vibrant area for our children and youth... They come here to hang out after school, to feel safe, to be okay.”

— Dayna Peebles, Sherwood Branch Supervisor

As a parent,
the library is
a big part of
community.
A safe, warm,
welcoming space.



Above: Architectural rendering of the children’s toolshed complete with a farm table, workbench, crates, and custom measuring tools, designed to spark creativity with hands-on learning.

Youth Area

New youth spaces will be designed with the needs of today’s young people in mind. Youth will have a dedicated area where they can engage in learning, studying, and socializing.

“We’re dedicating spaces that reflect community needs. Youth will have a gaming space that’s just for them.” Dayna Peebles, Sherwood Branch Library Supervisor, shares, “Somebody intentionally thought of them and wanted to make the space better for them. They’re going to feel seen.”

Creating a Dedicated Youth Area is Vital for Sherwood Branch

Over the years, Dayna has watched many kids grow up at Sherwood Branch—kids who’ve faced more than their fair share of challenges. But at Sherwood Branch, they were always met with open arms and calm voices. Over time, they began opening up, leaning on staff for support, and finding comfort in the familiar rhythm of Library life. Some now help out around the branch, eager to give back to the space that gave them so much. Dayna dreams of hiring them as Library Pages when they’re old enough.

When youth know they have a space that’s theirs, safe, stable, and filled with people who care, they thrive.



New Spaces for Everyone

Computer Workspaces

New computers and workspaces will provide vital access to digital resources, educational tools, and job-search assistance. These stations will help bridge the digital divide, empowering job seekers, students, and lifelong learners. They'll connect to the library's printing services and offer everything from resume-writing tools to high-speed internet for research and study.

Study Rooms

For students and job seekers alike, the new quiet rooms will provide distraction-free spaces for focused learning and collaboration. Whether studying for exams, working on a project, or attending virtual meetings, these spaces will support academic achievement and personal development.

Meeting Rooms

Our newly expanded meeting rooms will be the heartbeat of community programming at Sherwood Branch. These bright, accessible spaces are designed to flex with our community's needs from storytimes and craft workshops to English conversation circles and tech help sessions.



Programs Changing Lives

Sherwood Branch Library's programming has always been reflective of the diverse needs of its community. Below are some of the programs at Sherwood Branch:

READ Program (since 1988)

We support children with reading difficulties through one-on-one reading help and encouragement. For kids who've struggled in the classroom, this is where confidence is built and the joy of reading begins.

Library Settlement Services (in partnership with Northwest London Resource Centre)

We connect newcomers with vital community resources. From navigating services to English conversation circles, this program ensures newcomers don't feel alone in their first year.

Children's Programming

Storytime sessions, EarlyON playgroups, and STEAM-based learning offer young children essential opportunities to socialize, explore, and prepare for school.

Youth Engagement & After-School Clubs

Donor-supported programs like board games, gaming, crafts, and homework help give youth a place to go after school where they feel safe, seen, and supported.

Seniors Programming

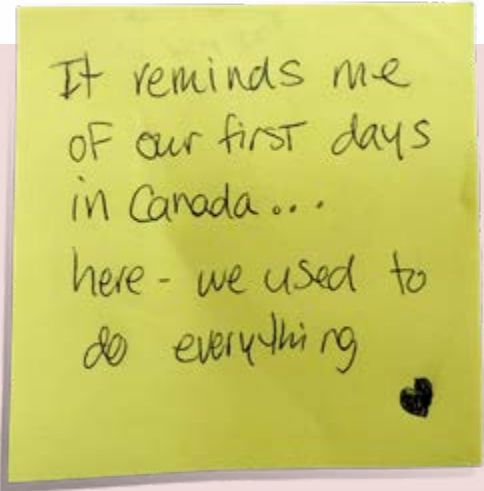
Coffee chats, knitting circles, and tech tutoring are a cure for loneliness. For many older adults, these programs are their primary source of social interaction and community.

Every visit to Sherwood Branch is an opportunity to create lasting memories, from a child checking out their first book to a senior learning how to use digital tools to stay connected with family.

Libraries are Lifelines for Newcomers

The day after arriving in Canada from Botswana, a family walked into the Sherwood Branch. They didn't know much about the city yet, but they knew that the Library was the place to start. They were welcomed and gently guided to Ingrid, our Library Settlement Partnership worker, who helped them navigate their next steps with warmth and care.

At Sherwood Branch, newcomers find conversation circles where they can practice English, computers and study rooms where they prepare for citizenship tests, and most importantly, a sense of belonging. With your support, we can ensure that welcome is always waiting.



Real Stories. Real Impact.

When you give to the Sherwood Branch Library renovation, you are investing in more than just bricks and mortar.

You are helping to create a space where:

- Children discover a love of reading
- Youth gather to study and make friends
- Seniors stay engaged and connected
- Families come together to learn and grow
- Newcomers find belonging and support
- Job Seekers access the tools they need to succeed

This renovation is a renewal of our commitment to a connected, equitable, and vibrant London. With your help, we can build a space that reflects the dreams of our community, fosters community connection and serves generations to come.



You're giving hope. You're giving opportunity. You're giving community.

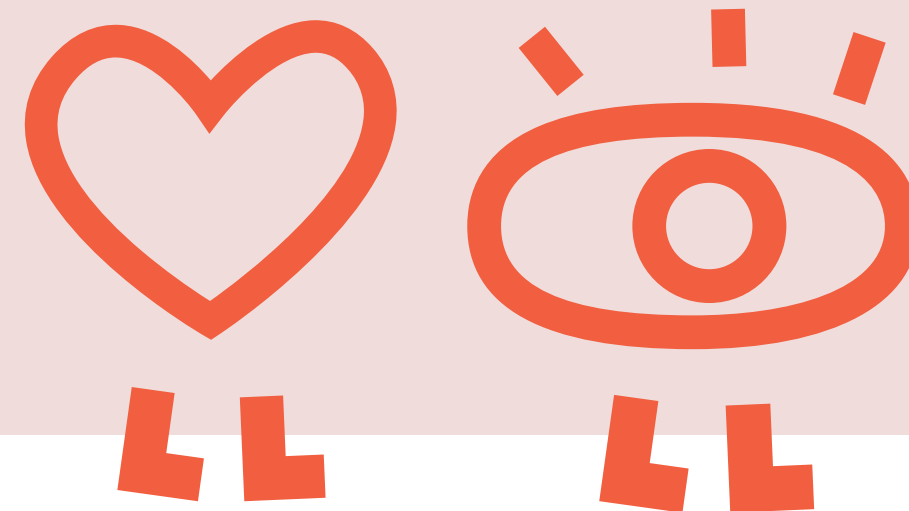
When you give to Sherwood Branch Library, you're giving more than money.

Every contribution, large or small, brings us closer to opening the doors of a transformed Sherwood Branch. When you walk through those doors, you'll see your impact in every corner, from the interactive children's area to the quiet study rooms where the future is imagined.

No One Should Feel Invisible

At Sherwood Branch, seniors find purpose, connection, and a reason to leave home. "We're often the only people they talk to in a day," Dayna shared. "One regular comes in each morning to read the newspaper and chat with staff. It's a small ritual, but it means everything. For seniors living alone, the Library is a place to be seen, to be known, and to feel valued."

Whether it's sharing stories over coffee, learning a new tech skill, or knitting with friends in a diverse and welcoming circle. With a refreshed, more vibrant space, we can give our seniors even more reasons to feel connected and cared for. Because no one should feel invisible in the community they helped build.



Libraries Enrich Neighbourhoods

London Public Library serves nearly 2 million visitors annually through 16 vibrant neighbourhood branches, each one a trusted source for learning, connection, and creativity. Together, we lend more than 4 million items every year, deliver thousands of programs, and provide vital access to technology and resources.

We listen to what Londoners need, and we build solutions with purpose.

At the heart of this work is our purpose: to strengthen people and neighbourhoods by creating connections that enrich lives, inspire discovery, foster creativity, and expand possibilities. We are guided by core values: exceptional customer service, intellectual freedom, digital empowerment, foundational literacies, and a deep commitment to anti-racism and anti-oppression.

Support from donors brings these values to life. Your generosity helps:

- Put books into the hands of children discovering the joy of reading
- Offer inclusive programming that welcomes people of all backgrounds and ages
- Provide technology and support for job seekers preparing for their next opportunity
- Ensure our Libraries remain accessible, welcoming, and inspiring spaces for all

IMPACT

1,715,544
annual visits

4,196,102
items borrowed



16
NEIGHBOURHOOD
LOCATIONS



Every dollar invested in London Public Library creates tangible results.

A gift to Sherwood Branch Library is a gift that multiplies socially, educationally, and economically. It's a chance to create lasting impact, right in the heart of northwest London.

Sherwood Branch Library's Impact



150,000
In-person visits



16,555
Active Library
Card users



1,400
Programs Delivered



Bridging the digital divide
Patrons used computers 14,236 times



197,175
Items Borrowed

Return
On
Investment

For Every
\$1 Invested

LPL Contributes
\$6.48
To the Community

Why Support Matters

The Library fuels the London community's educational, social, and economic well-being. Sherwood Branch Library's transformation will create more equitable access, amplify community voices, and make our city stronger.

Education, Literacy, and STEM Learning

Vital programs that support children's early development, help youth explore future careers, and equip adults with new skills.

Community Access

Free and equitable access to computers, the internet, and digital tools ensures everyone can stay informed and connected. Our spaces are designed to be inclusive and welcoming for youth, seniors, families, and newcomers, removing barriers and opening doors to opportunity.

Social Connection and Support

Libraries strengthen communities by offering inclusive spaces where everyone belongs and can thrive. Through partnerships with social services and community agencies, we provide vital support for those in need and create connections that foster well-being.

Economic Growth

LPL contributes more than \$153 million annually to the local economy and offers a return on investment of 648%.

"Sherwood celebrates what the Library is about, which is bringing community together."

– A Sherwood Branch Library patron



Join us in Writing the Next Chapter

Your generosity will transform lives and make a lasting impact. Please consider making a gift to the Sherwood Branch Library Renovation.

With your help, we can complete the transformation of Sherwood Branch and open a new chapter in its story—one that continues to inspire, connect, and uplift our community.

Together, we can build a brighter future for northwest London.

We are already on our way—with \$562,965 secured toward our \$1,235,500 construction project budget thanks to the generous support of donors and partners.

Ways to Give

Naming Opportunities

Honour your family, business, or loved one with a lasting tribute in the new space.




Corporate Partnerships

Showcase your commitment to community impact and make a meaningful difference.



Community Contributions

Every gift matters. Together, pooled community support can shape the Sherwood Branch of tomorrow.



The time is now.

Help us reopen Sherwood Branch Library’s doors not just with new walls and windows, but with renewed purpose and possibility.

Let’s write the next chapter, together.

Let’s build the Library that our community dreams of and deserves.



To learn more or make your gift, please contact:

Christine Walker

Fund Development & Special Projects

London Public Library

519-661-5114

christine.walker@lpl.ca

www.lpl.ca/Donate

Charitable Registration # 11902 4065 RR0001

Find out more at www.lpl.ca/SherwoodReno

